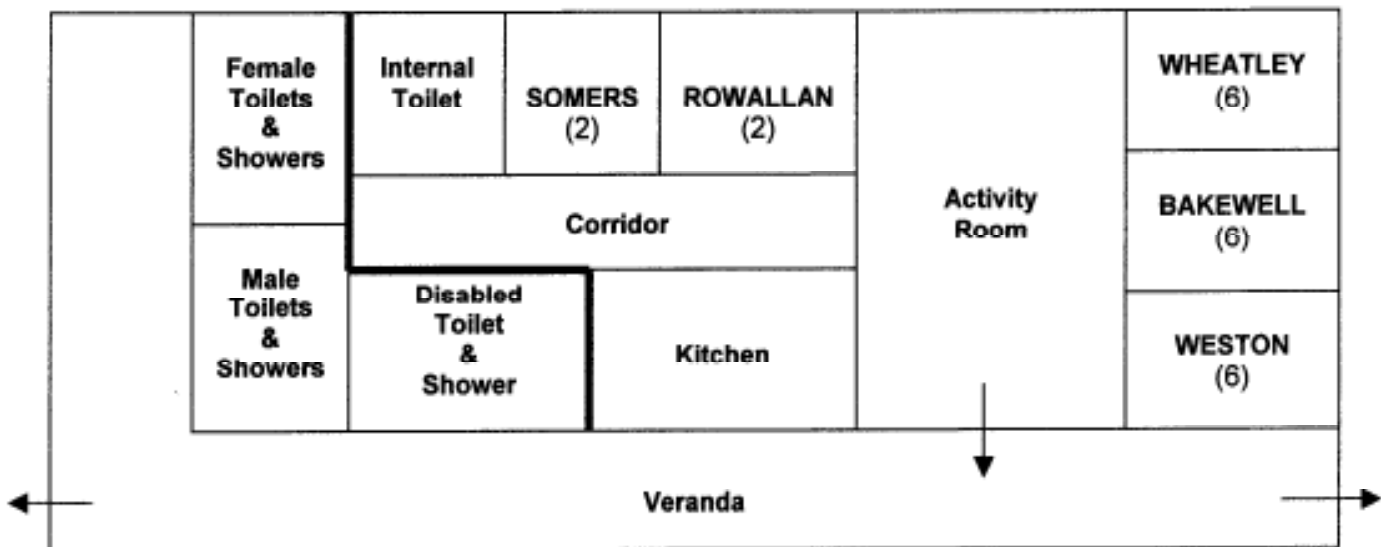


**City of Coventry Scout County  
NORTON CABIN**

**Norton cabin layout**



The Norton Cabin will accommodate 22 people in five bunkrooms, has an activity day room, kitchen and internal toilet for nighttimes use.

Three bunkrooms for 18 young people (Wheatley, Bakewell & Weston), with two bunkrooms for 4 leaders (Somers & Rowallan)

The kitchen is equipped with a cooker (having 8 hobs, 2 ovens and grill), fridge, freezer, kettle, microwave, and kitchen utensils, cooking pans, crockery and cutlery.

The Activity Room is equipped with 6 tables and 24 chairs, white board and 5 pin boards. It is recommended that soft shoes be worn within the building.

The building is centrally heated and is equipped with an automatic fire alarm system. The cabin is suitable for wheelchair users with the Weston Room being made more accessible if required.

The external toilets and showers are accessed from the veranda, and are for use by those occupying the Norton Cabin and other campers on site.

Additional trestle tables, chairs, benches are stored close by, only for use on the 'Ma Williams' Camping Field and not in the Norton Cabin.

You may begin your camp / holiday any day of the week, arrival and departure times will be agreed but in general would be: -

Weekday departure any time up until 12:00 Friday

Weekend arrival from 17:00 Friday until departure any time up until 16:00 Sunday

This enables us to check the campsite and building, carry out any maintenance and prepare for the next group.

<b>Norton Cabin (sleeps 18 + 4 leaders)</b>	<b>per day</b>
(Deposit required when booking Norton Cabin £30.00)	
Coventry Scouts	£35.00
Scouts & Guides	£40.00
Other Organisations	£50.00
Minimum number to be paid for in building (10)	£3.00 per person per night
Plus camp fee for those camping	see Camping Fee